

Dues

Dues statements have been mailed. Please return the statement with remittance.

Condolences

- ◆ To **John A. Zintsmaster** on the death of his mother, Alice Ann Zintsmaster, who passed away on March 24th and father, John R. Zintsmaster, who passed away on August 20, 2013, in Scottsdale, AZ.
- ◆ To **Amy Harris** on the death of her mother, Judith (Judi) Elaine Hall, who passed away August 24, 2013, in New York.
- ◆ To Starlynn Estep on the death of her sister, Nancy C. Phillips, who passed away August 29, 2013.
- ◆ To the family, friends and colleagues of **Hon. Harold E. Resteiner**, who passed away August 31, 2013, in Goodyear, AZ.
- ◆ To **Hon. David J. Goggins** on the death of his stepmother, Carol Goggins, who passed away September 5, 2013.

Genesee County Bar Foundation — Thank You

To **Clifford H. Hart** and **Howard J. Bueche** for their donations in memory of Hon. Harold Resteiner.

Case Evaluation Late Fee Donors

Thanks to **Ricky Carlson, Robert Chimovitz, Thomas Connolly** and **J.D. Winegarden** for donating their Case Evaluation late fees, which are placed in a restricted building account.

Foundation Dues Donations

Thanks to the following members who made a voluntary donation to the Bar Foundation through their dues statements as of 9-10-13: **Sherri Belknap; George Brueck; Howard Bueche; Ward Chapman; Hon. John Christensen; Jo Robin Davis; John K. Folts; Ernest Gifford; Peter Goodstein; Timothy Hartner; Edward Henneke; Edwin Jakeway; Lynnmarie Johnson; David Karr; Matthew Karr; Hon. Arthalu Lancaster; LindaLee Massoud; Thomas McKenney; Eric Mead; Edward Neithercut; Hon. Allen Nelson; Jill Nylander; John Pavlis; James Ricker; Richard Ruhala; Jack Straley; Earl Swain; Philip Swann; Henry Thoma; Christopher Trainor; and Roberta Wray.**

Welcome New Members

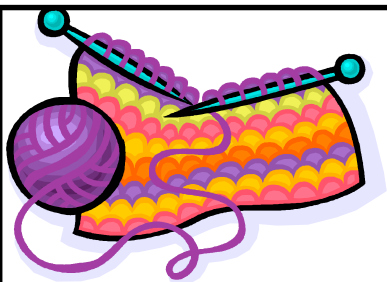
Welcome to our newest members, **Jennifer Manley** and **Scott R. Bigger**.

Baby Barrister

Congratulations to **Matt and Gillian Norwood** on the birth of their son, Reid Matthew Norwood, who was born on September 1, 2013, weighing 8 1/2 lbs and 20 inches long.

GCBA Senior Attorneys

The GCBA senior attorneys will meet on September 12th, October 10th and November 14th at 12 noon at Valley Coney Island, at Linden and Miller Rd. Anyone over 65 (retired or not) is welcome to attend.

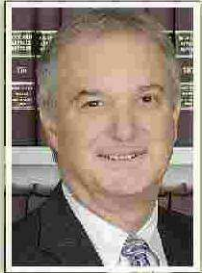


Are You Yarning to Help?

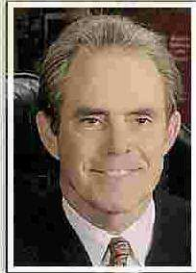
The GBCA still needs volunteers to knit and crochet hats, scarves, and mittens for our guests at the Annual Community Holiday Dinner. There is plenty of yarn available to anyone who is willing to help – lawyers, staff, family members, or friends. Just come to the GCBA office to pick up whatever materials you think you will be able to use. Contact Linda Pohly at 733-7480, for patterns and project ideas.

Thanks to Gladys Buchanan (Diane Chema's mom) for taking time out of her summer to knit for the cause.

25th Anniversary of the Genesee County Bar Foundation



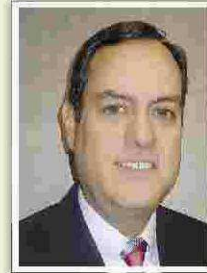
President
Walter P. Griffin



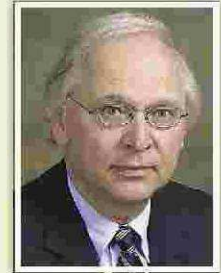
Vice President
Hon.
Duncan M. Beagle



Secretary
Kathleen
Buckley-O'Neill



Treasurer
Jeffry D. Rocco



Past President
Carl L. Bekofske

Trustees:

Carl L. Bekofske
Francine Cullari

Patric A. Parker
Randolph P. Piper

Hon. Thomas C. Yeotis
James J. Wascha, Ex-officio

Tatilia Y. Burroughs,
Executive Director

Thank You

for supporting your Foundation for the last 25 years

23rd Annual Community Holiday Dinner

Save the Date
Wednesday, December 18, 2013
4:00 p.m. to 7:00 p.m.
Flint Masonic Temple
755 S. Saginaw St. ♦ Flint, MI 48502

Volunteer Opportunities Available!

A gift to the community...
from the lawyers of the
Genesee County Bar Association &
Genesee County Bar Foundation





September Membership Meeting

featuring

David S. Leyton Genesee County Prosecutor

September 16, 2013 ♦ 12 noon
Masonic Temple

CUSTOMER INFORMATION: Please print legibly

September 16th Sustaining Member - Free GCBA Member - \$10 Non-member - \$15
\$15 for walk-ins. Unpaid no-shows will be billed \$15.

Name: _____ Phone #: _____

Payment Information: Note the attached check # _____ Checks payable to the GCBA

Credit card information: Visa MasterCard Charge my credit card for \$ _____

Credit Card Account #: _____ Exp. date: _____ Last 3#'s on back of card: _____

Name as appears on card: _____

Billing address for card: _____

MAIL registration form with check to the Genesee County Bar Association, 315 E. Court St., Flint, MI 48502. **FAX** registration form with credit card information to the GCBA at (810) 232-8310. **ON-LINE** register on-line at www.gcbalaw.org. **Telephone reservations are not accepted.**



2013-2014 Committee Registration Form

The GCBA is looking for you to sign up for a committee by placing a check in the space to the left of each committee you are willing to serve on.

Fax this form by September 27, 2013 to the GCBA at 810-232-8310 or mail to:

Genesee County Bar Association
315 E. Court St.
Flint, MI 48502

PLEASE PARTICIPATE IN THE DEVELOPMENT OF THE GCBA.

Committees

- | | |
|---|--|
| <input type="checkbox"/> ADR | <input type="checkbox"/> Bar Beat |
| <input type="checkbox"/> Bench and Bar | <input type="checkbox"/> Criminal Law & Defender |
| <input type="checkbox"/> District Court | <input type="checkbox"/> Family Court |
| <input type="checkbox"/> Federal Practice | <input type="checkbox"/> Golf Outing |
| <input type="checkbox"/> Law Day | <input type="checkbox"/> Lawyer Referral |
| <input type="checkbox"/> Legal Aid | <input type="checkbox"/> Probate Committee |
| <input type="checkbox"/> Professional Practice & Ethics | |

Name _____

(Please Print)

Signature _____ Date _____

Email Address _____

**RETURN BY SEPTEMBER 27, 2013
FAX TO (810) 232-8310**

"Like" us on Facebook <http://www.facebook.com/pages/Genesee-County-Bar-Association/142757561178>

**315 E. COURT STREET, FLINT, MI 48502
PHONE (810) 232-6000
FAX (810) 232-8310
WWW.GCBALAW.ORG**

GENESEE COUNTY BAR
ASSOCIATION

— presents a private showing of —

THE VERDICT

TUESDAY, OCTOBER 1, 2013

FLINT INSTITUTE OF ARTS
1120 East Kearsley Street, Flint

5-6 p.m.

Cocktail reception with cash bar and hors d'oeuvres.

*Browse the facility. Entire gallery will
be available for viewing.*

6:15 p.m.

Showing of The Verdict

Tickets \$10 (tickets will be held at the door)

Cash Bar

All proceeds will benefit the Genesee County Bar Foundation

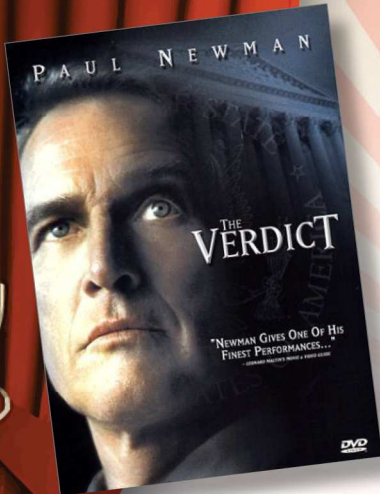
Co-Sponsors:

Genesee County Bar Foundation

Centennial American Inns of Court

Mallory, VanDyne, Scott Bar Association

Flint Trial Lawyers



REGISTRATION:

Please print legibly

Name: _____ Phone #: _____

Total number of tickets _____ Total amount enclosed: _____

Payment Information: Note the attached check # _____ Make check payable to the GCBF

Credit card information: Visa MasterCard _____ Charge my credit card for \$ _____

Credit Card Account #: _____ Exp. date: _____ Last 3#'s on back of card: _____

Card Billing Address: _____

Name as it appears on card: _____

MAIL registration form with check to the Genesee County Bar Association, 315 E. Court St., Flint, MI 48502.

FAX registration form with credit card information to the GCBA at (810) 232-8310.

Register on-line at www.gcbalaw.org. Telephone reservations are not accepted.



**THE CENTENNIAL
AMERICAN INN OF COURT**

*P. O. Box 320133
Flint, Michigan 48532*

LEGAL EXCELLENCE
CIVILITY
PROFESSIONALISM
ETHICS ■

MEMBERSHIP APPLICATION & INFORMATION SHEET

Name: _____ Date Admitted to Bar _____

Firm/Court/Organization: _____

Street Address: _____

City, State, Zip: _____

Phone: () _____ Fax: () _____ E-Mail: _____

Exact Position: _____ How long in this position? _____

Describe current job responsibilities and/or type of practice: _____

Other organizations to which you belong, and any offices held: _____

Where did you hear about the American Inns of Court? _____

Why do you want to join this American Inn of Court? _____

What special skills or experiences can you offer the organization? _____

Date: _____

Signature: _____



Join and save.

Genesee County Bar Association

is excited to announce an exclusive Membership offer: Employees/members will receive up to a \$25 Sam's Club® Gift Card when they sign up for a new Sam's Club Plus® Membership or renew an existing Plus Membership by July 31, 2014.

Or, choose a Sam's Savings™ or Sam's Business™ Membership and receive a \$10 Sam's Club Gift Card at sign-up¹ or renewal. In addition to remarkably low prices and discounts on items throughout the club, you'll also enjoy time-saving services in-club and online.

Plus Member Benefits

Instant Savings Plus*

Receive exclusive savings offers each month on merchandise throughout the club, including fresh produce, meat and bakery as well as Sam's own brands. Offers sent each month via email and electronically loaded to your card for automatic redemption at checkout.

Enjoy More Pharmacy Savings**

Plus and business members save even more on top of our already low cash prices, including 8% on name-brand prescriptions and 40% on generics not part of our \$4/\$10 generic prescription plan.

Early Shopping Hours

Plus and business members can beat the crowds starting at 7 am Monday-Saturday. (May vary by club)

Earn More Rewards†

Simply use your Sam's Club® Discover® card virtually anywhere Discover® is accepted.

Optical Discount††

Plus and business members receive \$40 off a regular-priced pair of prescription eyeglasses when purchasing a one-year supply of contact lenses not using vision plan/insurance benefits.

To take advantage of this offer

bring this offer along with proof of employment/membership to the Member Services Desk of your local club.

July 31, 2014

Sam's Plus
970504

Sam's Savings
263396

Sam's Business
263410



Visit SamsClub.com/membership for a full list of benefits.

* All terms and conditions apply. Instant savings and instant savings plus (collectively, "instant savings") are subject to availability. Instant savings are subject to valid dates. Select instant savings are available online. For Click 'n' Pull® purchases, instant savings can be redeemed at point of sale at the club with the primary membership card. State and local laws may require sales tax to be charged on the pre-discounted price of an item with an instant savings offer. To view your instant savings account, visit SamsClub.com/instant savings or download the Sam's Club app. Member must have a registered email on SamsClub.com in order to access the instant savings account page online. Visit SamsClub.com/instant savings for program details and terms and conditions. Instant savings may take up to 24 hours to load to a membership account and will be valid for 30 days after joining.

** Plus and business members save an additional 8% on name-brand prescriptions and 40% on generics not part of the \$4/\$10 generic prescription program, when paying out-of-pocket and not using prescription drug coverage. Savings based on the dispensing Sam's Club Pharmacy's regular retail cash price. Discounts do not apply to purchases submitted to any health benefit program, pharmacy benefit program, insurer or governmental health care program. Discount is non-transferable, may not be combined with other offers, and is available in-club only. Other restrictions may apply. See your local Sam's Club Pharmacy for details.

† Subject to Credit Approval. See "How to Earn Cash Back Rewards" in the Sam's Club Discover credit application for complete details. Discover® and Discover® Network acceptance marks are service marks used by GE Capital Retail Bank under license from Discover Financial Services.

†† Receive \$40 off a regular-priced pair of eyeglasses (frames and lenses) with a purchase of a one-year supply of contact lenses. Valid eyeglass and contact lens prescriptions required. One-year supply is determined by manufacturer's recommended wear schedule. Offer applies to prescription eyeglasses and prescription sunglasses. Professional eye exam not included. This offer does not apply to individuals using vision insurance of any kind, including Medicaid or Medicare, for all or part of their purchase. This offer is non-transferable and may not be combined with other offers except associate eyewear discount. Offer not available in Arkansas, Delaware, Oklahoma and Rhode Island, and is available in-club only.

¹ Join or renew as a Sam's Plus Member and receive a \$25 gift card at sign-up, or join or renew as a Sam's Savings or Sam's Business Member and receive a \$10 gift card at sign-up. You must be over the age of 18 to purchase a membership, and membership is subject to qualifications. This offer is valid for memberships issued in-club only and is not valid online. Gift card will be provided at the time membership card is issued. This offer may not be combined with any other offer or promotion. Only one gift card per primary member. Gift card may not be used to pay for membership fee. Membership cards are non-transferable and are valid at all Sam's Club locations worldwide. Walmart® and Sam's Club associates are not eligible for this offer. A Plus Membership and base membership includes one primary card and one spouse (or other household member over the age of 18) card. Primary memberships are valid for one year from the date of issue. Certificates and special promotions are not valid at SamsClub.com or by mail. Visit SamsClub.com/privacy to view our privacy policy. Offer not valid in Puerto Rico. For a limited time only. One-time use only. Only original certificates accepted.



Sam's Club will be at the monthly meeting: Monday, September 16th from 12pm-1pm

Sam's Plus - \$100 **\$25 Gift Card when you join or renew!**

- Instant Savings – discounts loaded on your card; book mailed to your home several times throughout the year. Automatically redeemed at checkout.
- Instant Savings Plus – Exclusive monthly offers on merchandise, including fresh produce, meat and bakery items.
- Pharmacy Savings – Save 40% on many generics and 8% on name-brand prescriptions.
- Optical Discount - \$40 off a regular-priced pair of Rx eyeglasses when purchasing a one-year supply of contact lenses. Also, \$40 off when you purchase 2 pairs of Rx eyeglasses
- Early Shopping Hours – Open an 7am Monday-Saturday
- Earn up to 2% cash back with a Sam's Club Discover card.
- Extra Protection Service Plan – receive an extra year of coverage with purchase of warranty plan.
- Click 'n' Pull – Order online by 5pm and your order will be ready for pickup at the club anytime the next day.
- Two annual membership cards

Sam's Savings - \$45 **\$10 Gift Card when you join or renew!**

- Instant Savings– discounts loaded on your card; book mailed to your home several times throughout the year. Automatically redeemed at checkout.
- \$40 off when you purchase 2 complete pairs of regularly priced Rx eyeglasses.
- Earn up to 1% cash back with a Sam's Club Discover card.
- Click 'n' Pull – Order online by 5pm and your order will be ready for pickup at the club anytime the next day.
- Two annual membership cards

Sam's Business - \$45 **\$10 Gift Card when you join or renew!**

- Instant Savings– discounts loaded on your card; book mailed to your home several times throughout the year. Automatically redeemed at checkout.
- Optical Discount - \$40 off a regular-priced pair of Rx eyeglasses when purchasing a one-year supply of contact lenses. Also, \$40 off when you purchase 2 pairs of Rx eyeglasses
- Pharmacy Savings – Save 40% on many generics and 8% on name-brand prescriptions.
- Early Shopping Hours – Open at 7am Monday-Saturday
- Earn up to 1% cash back with a Sam's Club Discover card.
- Click 'n' Pull – Order online by 5pm and your order will be ready for pickup at the club anytime the next day.
- Three annual membership cards – personal card, a household card and a company card.
- Add-On memberships - \$45 per add-on cardholder; each receives complimentary card.
- **AT THIS TIME I CAN ACCEPT CASH OR CHECK ONLY FOR PAYMENT. (RECEIPTS PROVIDED) I APOLOGIZE FOR ANY INCONVENIENCE.**

New Office Depot® Member Benefit Announced



Genesee County Bar Association is proud to present our members and supporters with a wonderful benefit program! Through Genesee County Bar Association, our members can now receive savings of up to 80% on office and school supplies from Office Depot. You can shop online or go to the nearest Office Depot location to take advantage of these special discounted prices on products and services. All online orders are delivered next day with free shipping on orders over \$50.

Go to www.gcbalaw.org and click on "Shop Online" to receive your savings online or click on "Print Free Card" to print the discount card for use at Office Depot locations. This program is 100% FREE to all Genesee County Bar Association members and supporters! Just shop and save! Office Depot was selected the #1 large GREEN retailer of the YEAR, for the third year in a row!

For more information, visit www.gcbalaw.org



Office DEPOT



Save on Office Supplies

- ✓ NO COST
- ✓ NO APPLICATION
- ✓ NO OBLIGATION
- ✓ SHOP ONLINE OR IN-STORE

EXCLUSIVE BENEFITS

Genesee County Bar Association has partnered with **Office Depot®** to bring you a **FREE** national discount program.

Up to 80% Off Preferred Products

3,000 of the Most Commonly Used Products at 15% off Retail Web Pricing

93,000 Products Discounted Below Retail

Next-Day Delivery with Free Shipping on Orders over \$50

Additional 15% OFF First-Time Online Orders

Terrific Copy & Print Pricing

FREE Lamination of your Discount Card

While supplies last. Offer limited to original copies of cards at time of purchase. Excludes replacement cards. See website for more details. Some restrictions apply. Offer is available while supplies last. Offer good for one-time use only. Not redeemable for cash or other products. Offer is available while supplies last. See website for more details. Offer is available while supplies last. See website for more details.

Coupon Code 82677141 **Office DEPOT**



To receive your savings online, go to: www.gcbalaw.org

Store Discount Card

Receive your discounts at any Office Depot® store. Retain This Card For Future Purchases



Store Purchasing Card
SPC Account # 80119359270

CARDHOLDER INSTRUCTIONS:
Present this card to an associate at your local Office Depot Store. You must pre pay when using self service copiers. To order online, go to www.gcbalaw.org and click Shop Online.



OFFICE DEPOT ASSOCIATE INSTRUCTIONS:
1. Begin sale transaction as normal. Self service copy transactions must be paid for at the register.
2. Press "Total" and then select, "Charge" or "F1>SPC Account" (touch screen only).
3. Enter SPC# and wait for register to re-price.
4. Purchases made using the card do not qualify for Worldle Rewards®.

Office Products = Pricing adjustments in accordance to national program's contract terms Version 10/10

Black & White copies = 25¢, Color copies = 25¢, Binding, Folding, Cutting 35% off retail.

Clip & Go!

1) Payment options for purchases made with Cards issued by a BDC Client to Cardholders through a group or employee purchasing organization are cash, check and credit card only. 2) Office Depot coupons valid at retail stores and used in conjunction with a Card will provide the Cardholder with a discount off of the retail store price only. The Card will permit the Cardholder to receive either its custom discount pricing or the retail store price after discounts, whichever is lower. 3) The Card must be presented at the point of sale/invoice for the Cardholder to receive its custom discounted pricing. 4) Office Depot reserves the right to alter, modify, suspend or terminate the Card for any reason. Upon the receipt of notice that the Card has been terminated, the Cardholder must destroy the Card. 5) If the BDC Client is issued more than one (5) Card, all Cards issued shall be subject to these Terms and Conditions. 6) Office Depot reserves the right, at any time, to modify these Terms and Conditions. Any modifications to these Terms and Conditions shall be effective upon posting the modified terms and conditions at business.officedepot.com or any successor website.

Start saving today! To order online, go to www.gcbalaw.org and click Shop Online.